

## surge and transient filter

### function

input voltage (V)	9 to 38
maximum current (A)	7
maximum power at 9V input (W)	65
maximum power at 18V input (W)	126
	reverse polarity protection
inrush current	electronically limited
surge protection (option l)	DEF-STAN 61-5 part 6 issue 6
(standard)	MIL-STD 1275

### signals

global disable	pull to 0V to disable output
baseplate temperature	$V_0 = (+6.25\text{mV}/^\circ\text{C} \times t^\circ\text{C}) + 424\text{mV}$

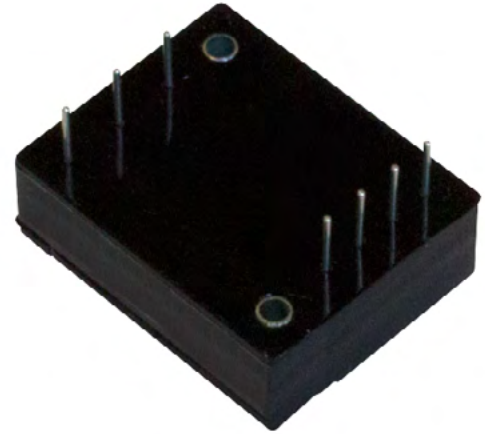
### environment

operating temperature (°C)	-46 to 90 (standard) -55 to 90 (option x)
storage temperature (°C)	-55 to 125
humidity	5 - 95% RH non-condensing
cooling	baseplate cooled
altitude (ft)	51,000
operating below sea level (ft)	1,500

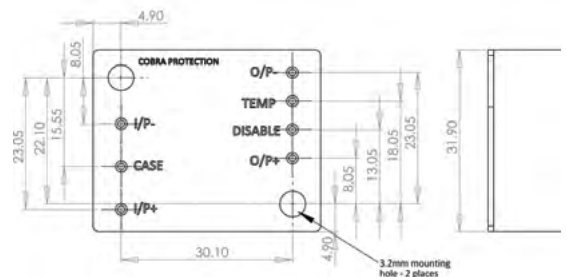
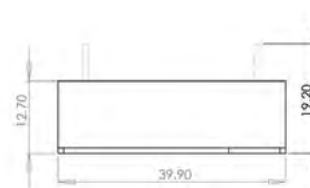
### regulatory

safety	EN60950-1
EMC	MIL-STD 461 E-F

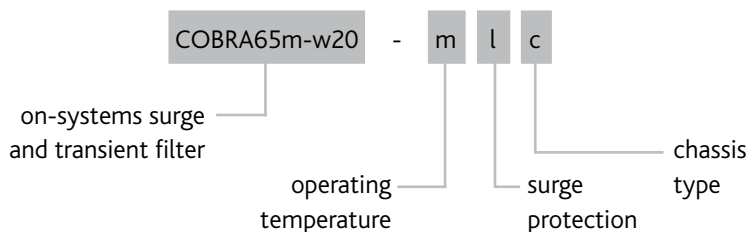
warranty	3 years
----------	---------



### pin out



### part number structure



for further information please contact on-systems

**0844 809 4608**  
**sales@on-systems.co.uk**

www.on-systems.co.uk