

surge and transient filter

function

input voltage (V)	9 to 38
maximum current (A)	15
maximum power at 9V input (W)	135
maximum power at 18V input (W)	270
	reverse polarity protection
inrush current	electronically limited
surge protection (option l) (standard)	DEF-STAN 61-5 part 6 issue 6 MIL-STD 1275

signals

global disable	pull to 0V to disable output
baseplate temperature	$V_0 = (+6.25\text{mV}/^\circ\text{C} \times t^\circ\text{C}) + 424\text{mV}$

environment

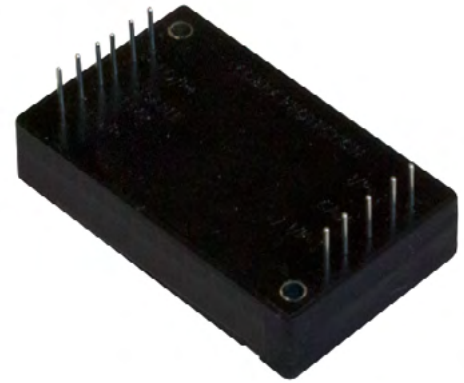
operating temperature (°C)	-46 to 90 (standard) -55 to 90 (option x)
storage temperature (°C)	-55 to 125
humidity	5 - 95% RH non-condensing
cooling	baseplate cooled
altitude (ft)	51,000
operating below sea level (ft)	1,500

regulatory

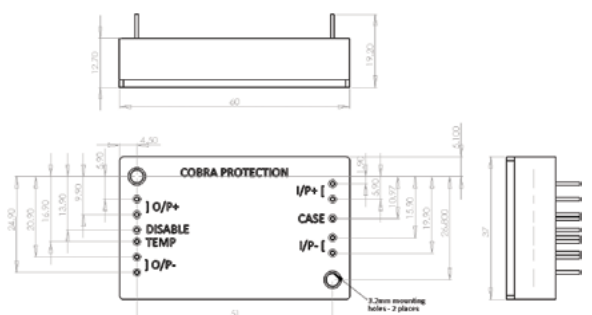
safety	EN60950-1
EMC	MIL-STD 461 E-F

warranty

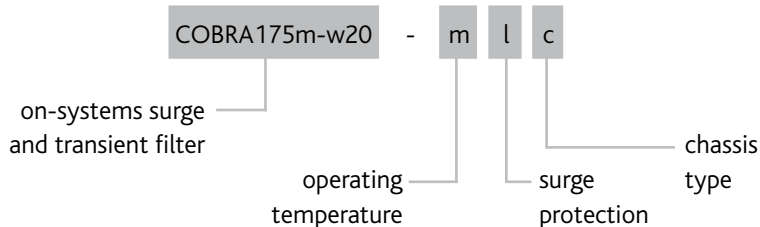
3 years



pin out



part number structure



for further information please contact on-systems

0844 809 4608
sales@on-systems.co.uk

www.on-systems.co.uk