

## surge and transient filter

### function

input voltage (V)	9 to 38
maximum current (A)	10
maximum power at 9V input (W)	90
maximum power at 18V input (W)	180
	reverse polarity protection
inrush current	electronically limited
surge protection (option l) (standard)	DEF-STAN 61-5 part 6 issue 6 MIL-STD 1275

### signals

global disable	pull to 0V to disable output
baseplate temperature	$V_0 = (+6.25\text{mV}/^\circ\text{C} \times t^\circ\text{C}) + 424\text{mV}$

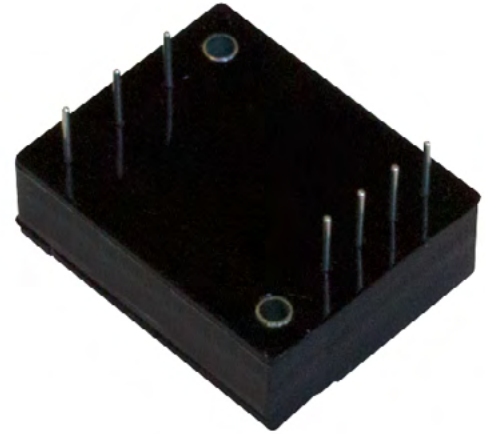
### environment

operating temperature (°C)	-46 to 90 (standard) -55 to 90 (option x)
storage temperature (°C)	-55 to 125
humidity	5 - 95% RH non-condensing
cooling	baseplate cooled
altitude (ft)	51,000
operating below sea level (ft)	1,500

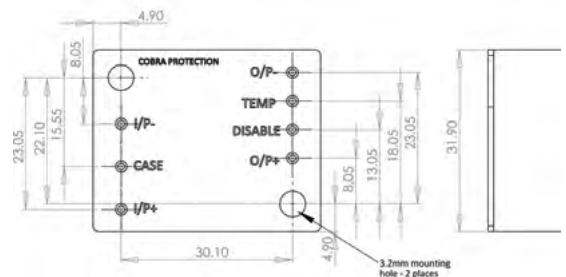
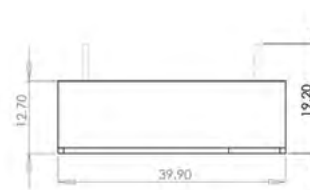
### regulatory

safety	EN60950-1
EMC	MIL-STD 461 E-F

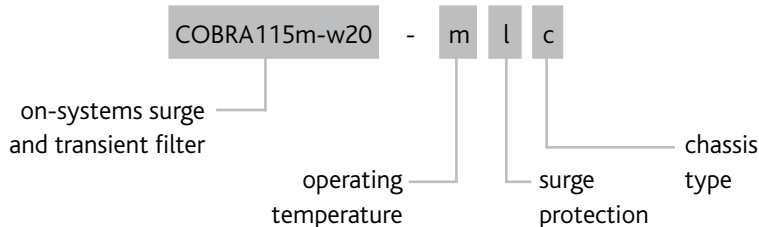
warranty	3 years
----------	---------



### pin out



### part number structure



for further information please contact on-systems

**0844 809 4608**  
**sales@on-systems.co.uk**

www.on-systems.co.uk