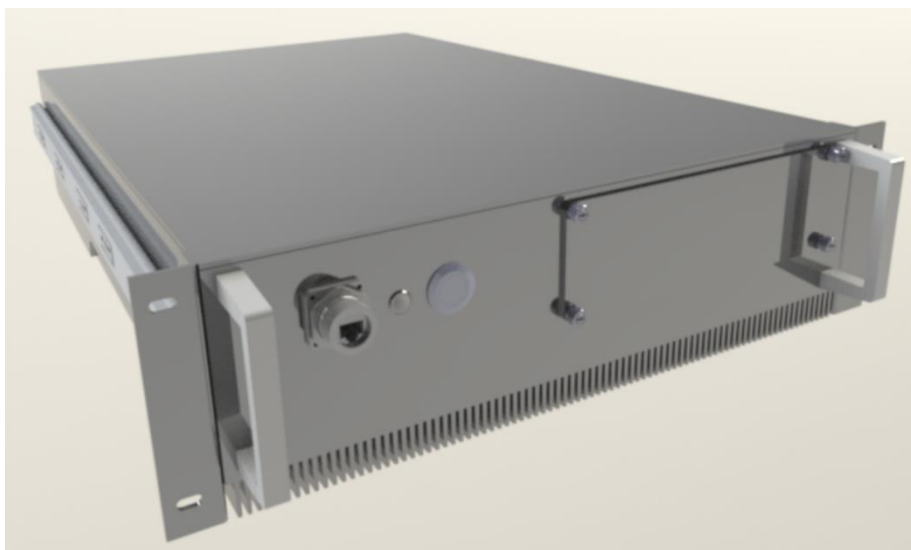


**UPS DUAL INPUT 2,100W UNINTERRUPTIBLE POWER SUPPLY**

- MIL-STD 704F / MIL-STD 1275E / MIL-STD 810G / MIL-STD 461F
- 80V to 264V AC 50 to 400Hz Input
- 18V to 36V DC Input
- Wide temperature range (-20C to 45C)
- 230VAC Output
- 28VDC output
- 10 minutes autonomy
- Hot-swappable Lithium Battery
- High reliability – MTBF >150,000 Hours
- 19" rack mount



**Description**

The PUMA-2450 2kVA UPS is designed for the extreme environmental and demanding electrical conditions of defence/aerospace applications. On-systems' UPS incorporates field proven high efficiency designs and rugged packaging technologies. This UPS will accept a wide range of input voltage and frequency values while delivering a well-conditioned AC output to the load.

The PUMA-2450 also provides a regulated 28VDC output. The use of lithium batteries permits the lowest profile and lowest weight solution in its power class. It is designed and manufactured in on-systems' UK facility to comply with a wide range of military standards.

**EAGLE UPS****Input**

Input Voltage	80...264VAC   18...36VDC
Input Protection	Mil-Std 704E   MIL-STD 1275E
Input to Output Isolation	3000 VAC RMS Test Voltage
Input to Case Isolation	1500 VAC RMS Test Voltage
Output to Case Isolation	500V RMS
Input Connector	D38999
Earth Connection	M6 Earth Stud

**General**

Overall Efficiency	>85% Typical
MTBF	150,000 Hours
Battery	Hot swappable Lithium   LRU
Cold Start	Cold start with no AC or DC input connections

**Output**

Output Power	2,100W
Output Voltage	230VAC   28V
No of Outputs	Up to 8 AC outputs   1 DC output
Output Regulation	+/- 2%
Output Protection	Circuit Breaker
Overvoltage Protection	
Overcurrent Protection	110 to 115%
Output Connector	D38999

**Environmental**

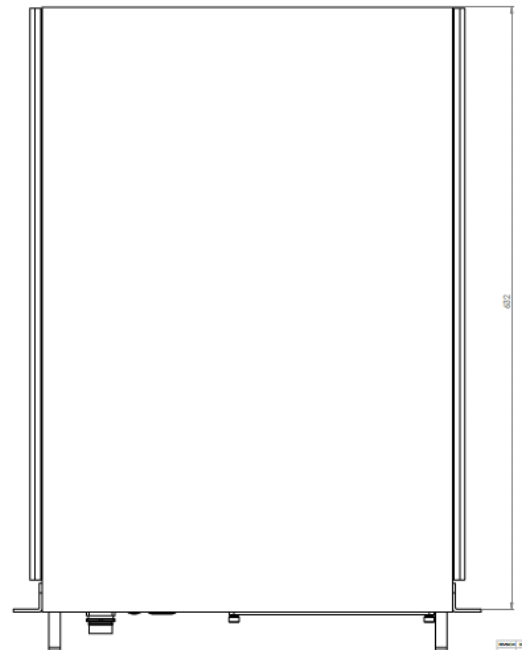
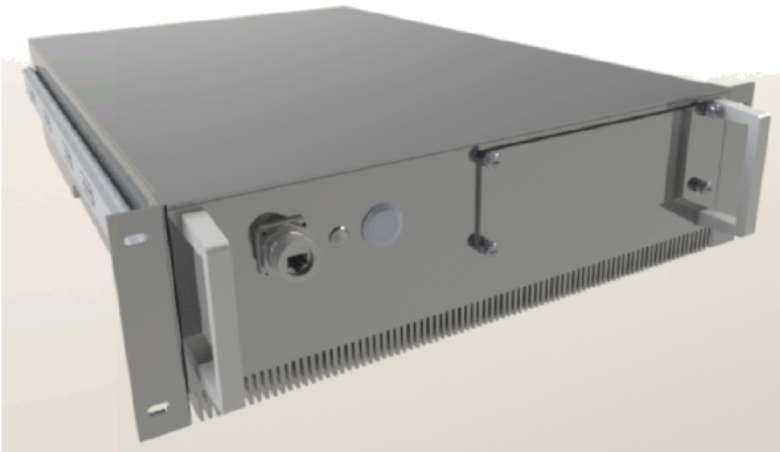
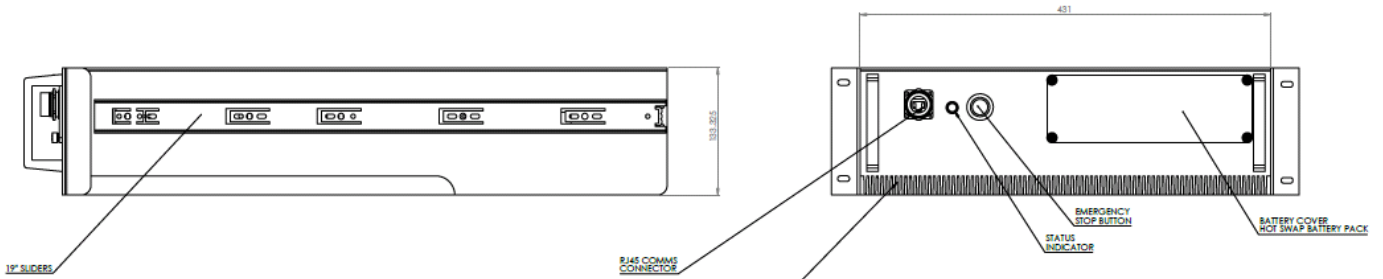
Operating Temperature	-20C to +55C
Storage Temperature	-20C to +65C
Environment	CARC   IRR   IP56   Lightning Protection   Sand   Dust   Snow   Ice
Vibration	Mil-Std 810E Method 514.6 Category Ground Mobile (Designed to Meet)
Shock	Mil-Std 810E Method 516.6 Procedure I (Designed to Meet)
EMI	Mil-Std 461F Part 1 & 2 CE101   CE102   CS101   CS106   CS114   CS115   CS116   RE101   RE102   RS101   RS103

**HMI**

Control Panel	LED status display with load & battery status, replace battery, overload, bypass, fault
Alarm	Audible alarm; on battery, low battery, overload, self-test
Interface	RJ-45 10/100 Base-T SNMP Protocol

**Mechanical**

Dimensions	19" with slide rails, 632mm long, 3U high
Weight	<25Kg
Cooling	Forced air across heatsink



NO.	DESCRIPTION	REV.	DATE	BY	CHKD.
1	Issue for Design	0			
2	Issue for Manufacturing	1			

Part No.	82-0-2450
Rev.	A1
Part Name	PUMA-2450 2KVA UPS
Manufacturer	On-systems